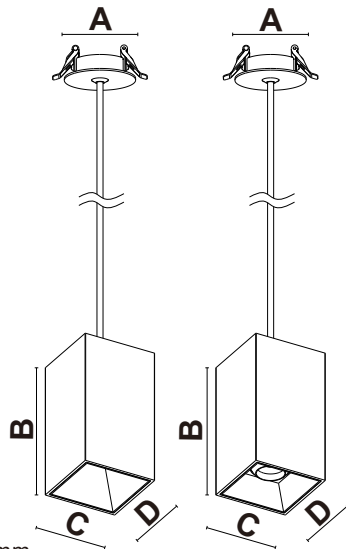


CETTIG ÷

Recessed Mounted Pendant
Series Downlight



Suitable for Ceiling thickness 5-20mm.

Model	Power	Products Size	Cut out
2905LED	8W/10W/12W/15W	A $\phi 80 \times B 115 \times C 90 \times D 90 \text{mm}$	$\phi 64 \text{mm}$
29015LED	10W/12W/15W/20W	A $\phi 80 \times B 150 \times C 90 \times D 90 \text{mm}$	$\phi 64 \text{mm}$
2902LED	20W/25W/30W	A $\phi 80 \times B 185 \times C 90 \times D 90 \text{mm}$	$\phi 64 \text{mm}$
29014LED	8W/10W/12W/15W	A $\phi 80 \times B 150 \times C 90 \times D 90 \text{mm}$	$\phi 64 \text{mm}$



To secure safety, a qualified electrician is required to install/remove the luminaire, in according with IEEE regulation and installation instructions.



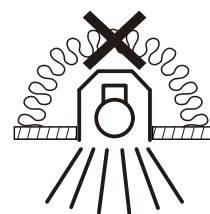
CAUTION: Electric Shock.....



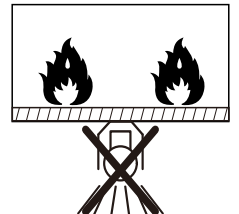
Don't stare at the operating light source.....



CAUTION: the luminaire must not be disposed of with household waste.....

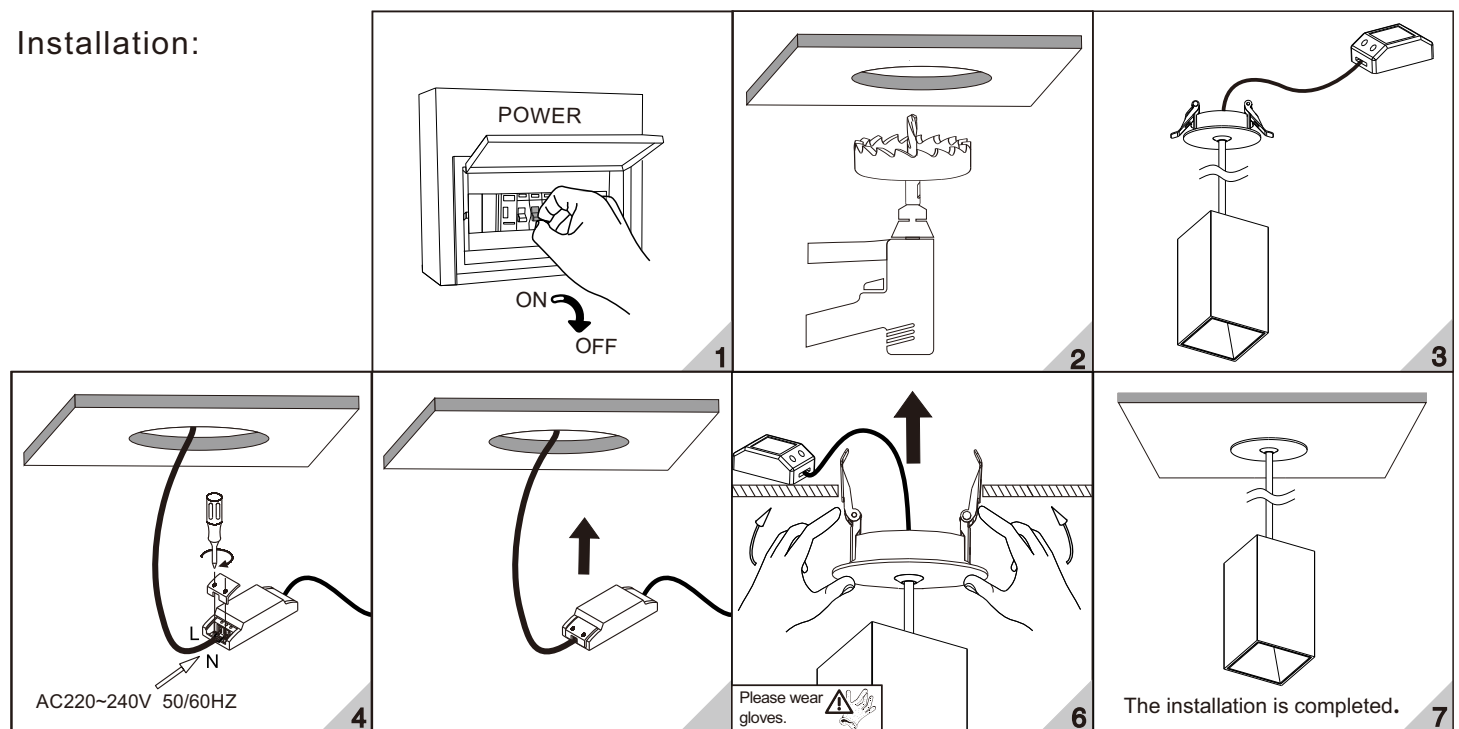


Luminaire not suitable for covering with thermally insulating material.



Luminaire can't recessed mounted into flammable material.

Installation:



Maintenance:

Pull out the fixture down from the ceiling.

